





FACTS

SCREENS 295 / 299

Strahlungsphysikalische
Parameter und
Leistungsbeurteilung
nach DIN EN 14501 (295)
und DIN EN 13363-1 (299)

	T _v %		T _s %		R _s %		A _s %		g _{tot} (außen)* %		 0-4		 0-4	 0-4	 0-4
	vorne	hinten	vorne	hinten	vorne	hinten	vorne	hinten	vorne	hinten	vorne	hinten			
295111	20,9	20,9	21,3	21,3	66,0	66,0	12,7	12,7	16	16	2	2	0	0	2
295112	18,3	18,2	22,2	24,0	58,0	56,4	19,8	19,7	13	13	3	3	0	1	2
295200	14,8	14,7	16,5	16,5	41,6	39,6	41,9	43,9	15	15	2	2	0	1	2
295201	6,8	7,0	56,6	63,5	33,4	27,5	10,0	9,0	12	13	3	3	1	2	2
295300	7,1	7,5	10,3	10,9	32,0	26,4	57,7	62,8	12	13	3	3	1	2	2
295400	5,4	5,3	9,3	9,4	29,6	25,7	61,1	64,9	13	14	3	3	1	2	2
295500	7,6	7,3	12,8	12,8	27,8	31,1	59,5	56,1	13	13	3	3	1	2	2
295700	12,9	12,8	15,7	15,7	51,0	46,5	33,4	37,9	12	13	3	3	0	1	2
295701	15,8	15,8	18,0	18,0	52,7	52,7	29,2	29,2	13	13	3	3	0	1	2
295705	10,1	10,1	13,0	13,0	38,8	38,8	48,3	48,3	11	11	3	3	1	1	2
295706	6,9	7,0	9,4	10,0	29,0	25,0	61,6	65,0	9	10	4	3	1	2	2
295710	7,0	6,7	8,0	7,7	18,3	26,4	73,6	65,9	10	10	3	3	1	2	2
295711	5,1	5,1	5,3	5,3	6,7	6,7	88,0	88,0	10	10	3	3	1	2	2
295712	14,8	14,3	17,2	16,8	49,7	55,3	33,1	27,9	15	14	2	3	0	1	2
295720	15,2	15,2	17,0	16,5	41,4	41,4	41,6	42,1	15	15	2	2	0	2	1
295730	7,3	7,3	7,8	7,8	24,7	22,5	67,5	69,7	11	11	3	3	0	3	1
295731	6,6	6,6	7,1	7,1	22,5	25,3	70,4	67,6	11	11	3	3	0	3	1
295760	12,0	11,7	14,0	13,9	37,5	37,4	48,5	48,8	14	13	3	3	0	1	2
295800	15,8	15,8	16,9	17,0	49,9	45,4	33,2	37,6	11	11	3	3	0	1	2
295801	15,8	15,5	16,9	16,7	49,9	55,4	33,2	27,9	11	11	3	3	0	1	2
295802	7,4	7,5	9,7	9,8	40,0	31,2	50,3	59,0	12	12	3	3	1	2	2
295803	9,1	8,7	11,5	11,1	32,1	39,6	56,4	49,3	13	12	3	3	1	1	2
295804	7,6	7,6	9,8	9,8	33,9	27,8	56,3	62,3	12	12	3	3	1	2	2
295807	12,9	12,9	14,3	14,3	38,0	38,0	47,7	47,7	12	12	3	3	0	1	2
295808	10,2	10,2	11,0	11,0	36,9	36,9	52,1	52,1	12	12	3	3	1	1	2
295809	7,8	7,5	10,8	10,2	27,7	33,0	61,6	56,8	12	12	3	3	1	2	2
295810	6,8	6,8	7,1	7,1	20,5	20,4	72,4	72,5	11	11	3	3	0	2	2
295811	10,2	10,2	10,1	10,1	39,4	39,4	50,5	50,5	11	11	3	3	1	1	2
295812	8,0	8,0	8,3	8,3	17,0	18,4	74,7	73,3	12	12	3	3	0	3	1
295815	6,6	6,6	8,0	8,0	19,8	19,8	72,2	72,2	13	13	3	3	1	2	2
295820	5,0	4,8	5,0	5,5	11,7	15,4	83,4	79,1	12	11	3	3	1	2	2
295824	4,4	4,3	4,5	4,4	6,5	7,0	89,0	88,6	11	11	3	3	1	2	2
295825	4,8	4,6	5,1	5,0	13,3	9,6	81,6	85,4	11	11	3	3	1	2	2
295826	3,5	3,5	3,5	3,5	7,4	7,4	89,1	89,1	11	11	3	3	1	2	2
295900	4,2	4,2	4,3	4,3	5,9	5,9	89,8	89,8	12	12	3	3	1	2	2
295999	4,5	4,5	4,5	4,5	4,0	4,0	91,6	91,6	11	11	3	3	1	2	2
299801	4,3	4,3	5,3	5,3	48,8	58,5	45,9	36,2	8	8	4	4	2	2	2
299802	2,0	2,0	2,2	2,2	44,8	31,2	53,0	66,6	6	6	4	4	4	2	2
299811	2,1	2,1	2,8	2,8	36,9	36,9	60,3	60,3	5	5	4	4	4	2	2
299815	2,2	2,2	2,4	2,4	17,4	17,4	80,2	80,2	6	6	4	4	4	2	2
299820	1,2	1,2	1,2	1,2	10,5	14,0	88,3	84,8	9	9	4	4	4	2	2
299900	1,1	1,1	1,1	1,1	5,9	5,9	93,0	93,0	6	6	4	4	4	2	2



SCREENS
295 / 299

Neues Sortiment 2025

Verfügbare Rollenbreiten - neues Sortiment 2025

Screen 295 xxx	250 cm	270 cm	285cm	320 cm
112, 200, 201, 300, 400, 500, 701, 705,706, 710 712, 720, 760, 800, 801, 803, 809, 811, 825	✓			
711, 808, 826, 999			✓	
731, 812		✓		
111, 700, 802, 804, 807, 815, 820, 824, 900	✓			✓
730, 810		✓		✓
Screen 299 xxx	250 cm	270 cm	285cm	320 cm
801, 802, 811, 815, 820, 900		✓		

Hinweis: Druckfarben können von Echtfarben abweichen



Reinigung & Pflege



schwer entflammbar

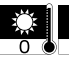
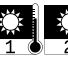


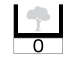

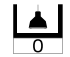
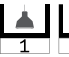
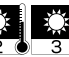



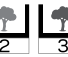




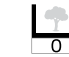
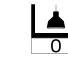
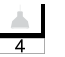


licht- und wetterecht

Technische Daten

	Screens 295		Screens 299	
Material	DIN 60 001	42 % Glasfaser / 58 % PVC	DIN 60 001	42 % Glasfaser / 58 % PVC
Materialstärke	ISO 5084	0,55 mm – 0,75 mm	ISO 2286-3	0,78 mm
Gewicht	NF EN 12127	525 g/m²	NF EN 12127	638 g/m²
Wettertechtheit	ISO 105 B04	> 7	ISO 105 B04	> 7
Höchstzugkraft	ISO 1421	Kette: 225 daN/5cm Schuss: 200 daN/5cm	ISO 1421	Kette: 225 daN/5cm Schuss: 216 daN/5cm
Weiterreißkraft	ISO 4674-1 Methode 2	Kette: 8,5 daN Schuss: 7,5 daN	ISO 4674-1 Methode 2	Kette: 5,9 daN Schuss: 6,2 daN
Brennverhalten	EN 13501-1	C-s3-d0	UNE-EN 13501-1 - 1:2007	C-s3,d0
Öffnungsfaktor	NBN EN 410	4 – 5 %	NBN EN 410	1 %

Thermische und visuelle Stoffeigenschaften nach DIN EN 14501

Thermischer Komfort*		Visueller Komfort					
Sommerlicher Wärmeschutz		Blendschutz		Durchsicht nach außen		Sichtschutz bei Nacht	
 0	 1	 0	 1	 0	 1	 0	 1
 2	 3	 2	 3	 2	 3	 2	 3
 4		 4		 4		 4	
0 - sehr geringer Wärmeschutz 1 - geringer Wärmeschutz 2 - guter Wärmeschutz 3 - sehr guter Wärmeschutz 4 - sehr hoher Wärmeschutz		0 - sehr geringer Blendschutz 1 - geringer Blendschutz 2 - guter Blendschutz 3 - sehr guter Blendschutz 4 - sehr hoher Blendschutz		0 - keine Durchsicht 1 - sehr eingeschränkte Durchsicht 2 - eingeschränkte Durchsicht 3 - gute Durchsicht 4 - sehr gute Durchsicht		0 - sehr geringer Sichtschutz 1 - geringer Sichtschutz 2 - guter Sichtschutz 3 - sehr guter Sichtschutz 4 - sehr hoher Sichtschutz	

* Einsatz im Senkrecht-Bereich: Berechnung g_{tot} nach DIN EN 13 363-1 Zweifachglas mit Wärmeschutz U = 1,2 | g = 0,59 (Referenzglas C nach DIN EN 14501 im Außeneinsatz)

Hinweis: Bei den angegebenen Werten handelt es sich um Mittelwerte mit einer Toleranz von +/- 5 %. Änderungen, die dem technischen Fortschritt dienen, behalten wir uns vor. Die Angaben entsprechen unserem heutigen Kenntnisstand und sollen ohne Rechtsverbindlichkeit informieren.



www.sattler-projects.com

SCREENS 295

2025 - SORTIMENTSERWEITERUNG,
zusätzlich neue Breiten verfügbar.



295 111 white/white
[Sun icon 2] [Thermometer icon 0] [Monitor icon 0] [Tree icon 2] [Light icon 2] [Double arrow icon] 250/320



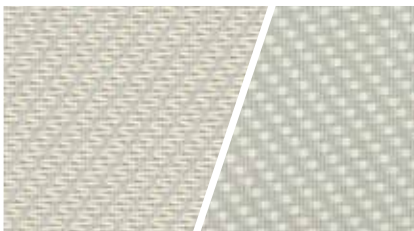
295 701 linen/linen
[Sun icon 3] [Thermometer icon 0] [Monitor icon 1] [Tree icon 2] [Light icon 2] [Double arrow icon] 250



295 112 linen/white
[Sun icon 3] [Thermometer icon 0] [Monitor icon 1] [Tree icon 2] [Light icon 2] [Double arrow icon] 250



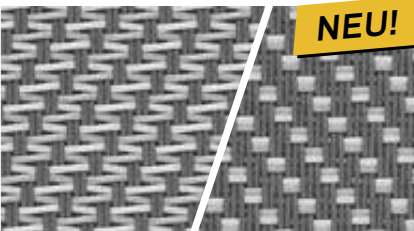
295 731 duck egg
[Sun icon 3] [Thermometer icon 0] [Monitor icon 3] [Tree icon 1] [Light icon 2] [Double arrow icon] 270



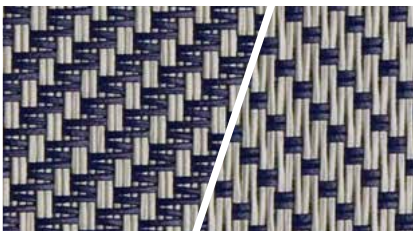
295 720 pearl/leinen
[Sun icon 2] [Thermometer icon 0] [Monitor icon 2] [Tree icon 1] [Light icon 2] [Double arrow icon] 250



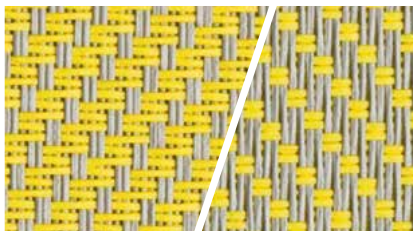
295 760 pearl/sand
[Sun icon 3] [Thermometer icon 0] [Monitor icon 1] [Tree icon 2] [Light icon 2] [Double arrow icon] 250



295 804 grey/white pearl
[Sun icon 3] [Thermometer icon 1] [Monitor icon 2] [Tree icon 2] [Light icon 2] [Double arrow icon] 250/320



295 500 pearl grey/blue azur
[Sun icon 3] [Thermometer icon 1] [Monitor icon 2] [Tree icon 2] [Light icon 2] [Double arrow icon] 250



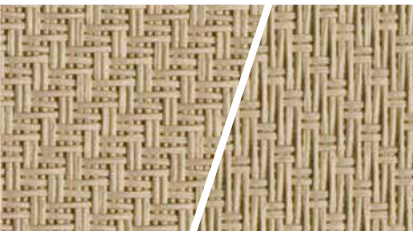
295 200 pearl grey/yellow
[Sun icon 2] [Thermometer icon 0] [Monitor icon 1] [Tree icon 2] [Light icon 2] [Double arrow icon] 250



295 712 weiß/sand
[Sun icon 2/3] [Thermometer icon 0] [Monitor icon 1] [Tree icon 2] [Light icon 2] [Double arrow icon] 250



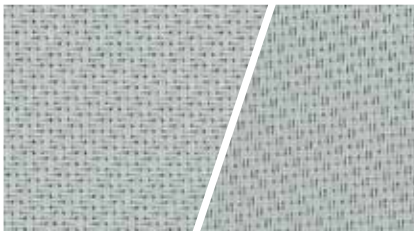
295 700 sand/white
[Sun icon 3] [Thermometer icon 0] [Monitor icon 1] [Tree icon 2] [Light icon 2] [Double arrow icon] 250/320



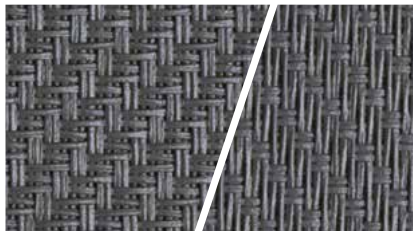
295 705 sand/sand
[Sun icon 3] [Thermometer icon 1] [Monitor icon 1] [Tree icon 2] [Light icon 2] [Double arrow icon] 250



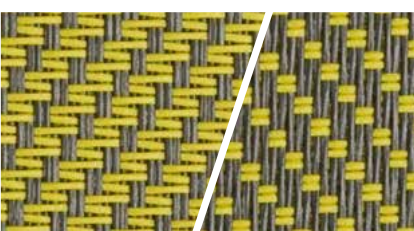
295 803 leinen/grau
[Sun icon 3] [Thermometer icon 1] [Monitor icon 1] [Tree icon 2] [Light icon 2] [Double arrow icon] 250



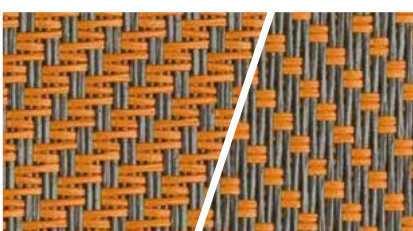
295 808 grau/grau
[Sun icon 3] [Thermometer icon 1] [Monitor icon 1] [Tree icon 2] [Light icon 2] [Double arrow icon] 285



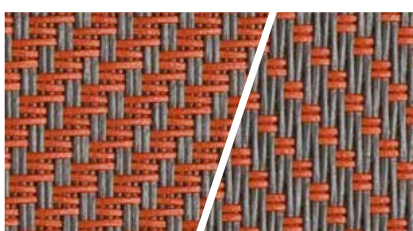
295 815 grey/grey
[Sun icon 3] [Thermometer icon 1] [Monitor icon 2] [Tree icon 2] [Light icon 2] [Double arrow icon] 250/320



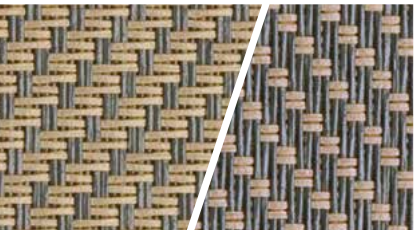
295 201 grey/yellow
[Sun icon 3] [Thermometer icon 1] [Monitor icon 2] [Tree icon 2] [Light icon 2] [Double arrow icon] 250



295 300 grey/gold
[Sun icon 3] [Thermometer icon 1] [Monitor icon 2] [Tree icon 2] [Light icon 2] [Double arrow icon] 250



295 400 grey/mandarine
[Sun icon 3] [Thermometer icon 1] [Monitor icon 2] [Tree icon 2] [Light icon 2] [Double arrow icon] 250



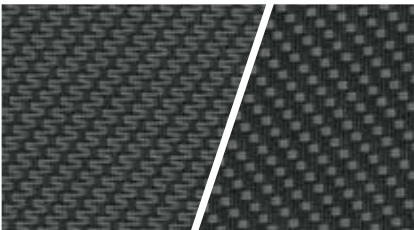
295 706 grey/sand
[Sun icon 4/3] [Thermometer icon 1] [Monitor icon 2] [Tree icon 2] [Light icon 2] [Double arrow icon] 250



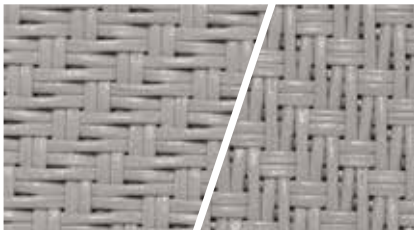
295 809 sand/grau
[Sun icon 3] [Thermometer icon 1] [Monitor icon 2] [Tree icon 2] [Light icon 2] [Double arrow icon] 250



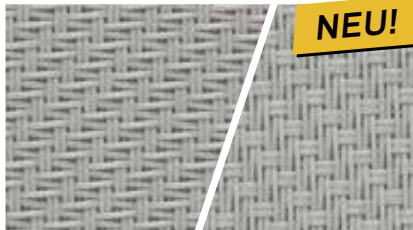
295 800 pearl grey/white
[Sun icon 3] [Thermometer icon 0] [Monitor icon 1] [Tree icon 2] [Light icon 2] [Double arrow icon] 250



295 825 charcoal/grau
[Sun icon 3] [Thermometer icon 1] [Monitor icon 2] [Tree icon 2] [Light icon 2] [Double arrow icon] 250

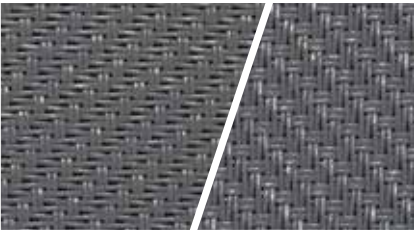


295 820 grey/charcoal
[Sun icon 3] [Thermometer icon 1] [Monitor icon 2] [Tree icon 2] [Light icon 2] [Double arrow icon] 250/320

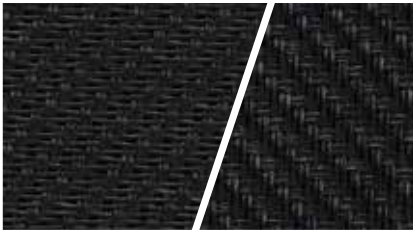


295 807 pearl
[Sun icon 3] [Thermometer icon 0] [Monitor icon 1] [Tree icon 2] [Light icon 2] [Double arrow icon] 250/320

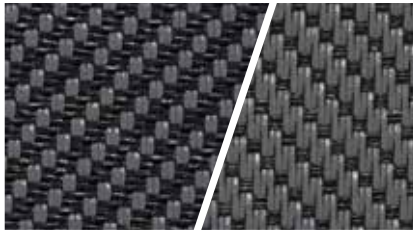
SCREENS 299



299 815 grey/grey
[Sun icon 4] [Thermometer icon 4] [Monitor icon 2] [Tree icon 2] [Light icon 2] [Double arrow icon] 270



299 900 charcoal/charcoal
[Sun icon 4] [Thermometer icon 4] [Monitor icon 2] [Tree icon 2] [Light icon 2] [Double arrow icon] 270



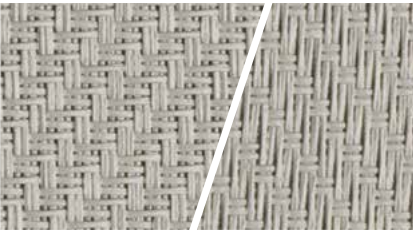
299 820 grey/charcoal
[Sun icon 4] [Thermometer icon 4] [Monitor icon 2] [Tree icon 2] [Light icon 2] [Double arrow icon] 270



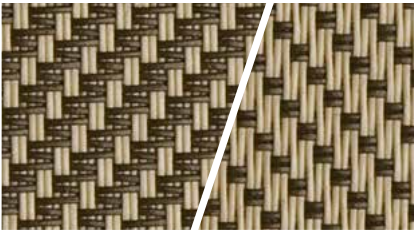
295 801 white/pearl grey
[Sun icon 3] [Thermometer icon 0] [Monitor icon 1] [Tree icon 2] [Light icon 2] [Double arrow icon] 250



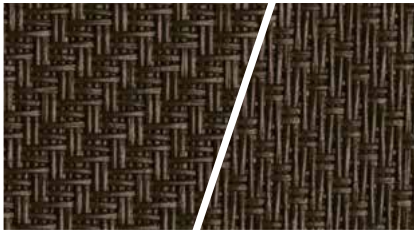
295 802 grey/white
[Sun icon 3] [Thermometer icon 1] [Monitor icon 2] [Tree icon 2] [Light icon 2] [Double arrow icon] 250/320



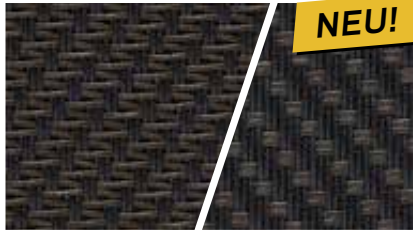
295 811 pearl grey/pearl grey
[Sun icon 3] [Thermometer icon 1] [Monitor icon 1] [Tree icon 2] [Light icon 2] [Double arrow icon] 250



295 710 sand/bronze
[Sun icon 3] [Thermometer icon 1] [Monitor icon 2] [Tree icon 2] [Light icon 2] [Double arrow icon] 250



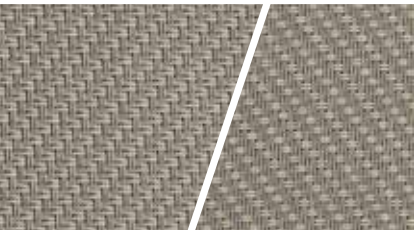
295 711 bronze/bronze
[Sun icon 3] [Thermometer icon 1] [Monitor icon 2] [Tree icon 2] [Light icon 2] [Double arrow icon] 285



295 824 charcoal/bronze
[Sun icon 3] [Thermometer icon 1] [Monitor icon 2] [Tree icon 2] [Light icon 2] [Double arrow icon] 250/320



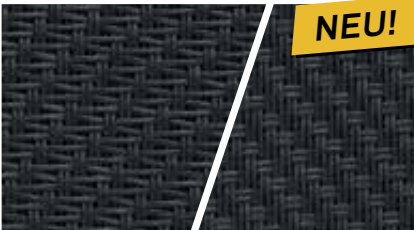
295 810 sandstone
[Sun icon 3] [Thermometer icon 0] [Monitor icon 2] [Tree icon 2] [Light icon 2] [Double arrow icon] 270/320



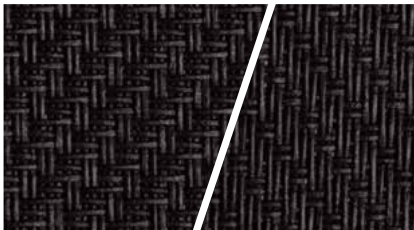
295 730 soft clay
[Sun icon 3] [Thermometer icon 0] [Monitor icon 3] [Tree icon 1] [Light icon 2] [Double arrow icon] 270/320



295 812 oyster shell
[Sun icon 3] [Thermometer icon 0] [Monitor icon 3] [Tree icon 1] [Light icon 2] [Double arrow icon] 270



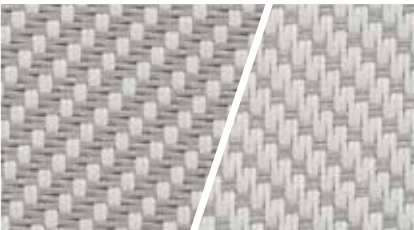
295 826 anthracite grey
[Sun icon 3] [Thermometer icon 1] [Monitor icon 2] [Tree icon 2] [Light icon 2] [Double arrow icon] 285



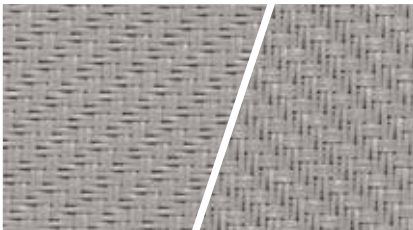
295 900 charcoal/charcoal
[Sun icon 3] [Thermometer icon 1] [Monitor icon 2] [Tree icon 2] [Light icon 2] [Double arrow icon] 250/320



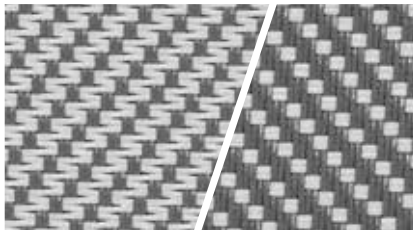
295 999 black
[Sun icon 3] [Thermometer icon 1] [Monitor icon 2] [Tree icon 2] [Light icon 2] [Double arrow icon] 285



299 801 white/pearl grey
[Sun icon 4] [Thermometer icon 2] [Monitor icon 2] [Tree icon 2] [Light icon 2] [Double arrow icon] 270



299 811 pearl grey/pearl grey
[Sun icon 4] [Thermometer icon 4] [Monitor icon 2] [Tree icon 2] [Light icon 2] [Double arrow icon] 270



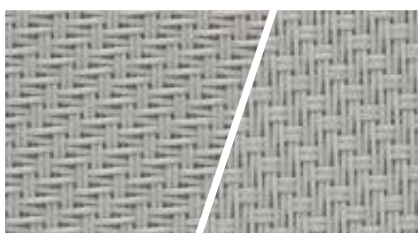
299 802 grey/white
[Sun icon 4] [Thermometer icon 4] [Monitor icon 2] [Tree icon 2] [Light icon 2] [Double arrow icon] 270



SCREENS 295

ERGÄNZUNGEN ZUM BESTEHENDEN SORTIMENT - Gültig ab Q1/2025

NEU!



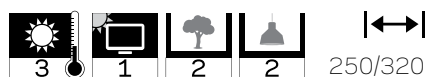
295 807 pearl



NEU!



295 824 charcoal/bronze



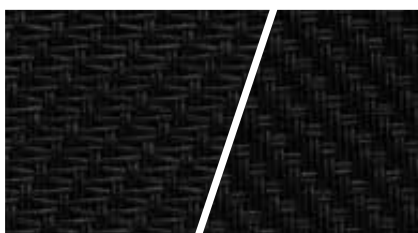
NEU!



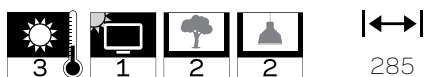
295 826 anthracite grey



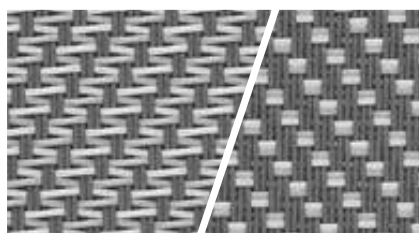
NEU!



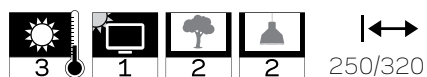
295 999 black



NEU!



295 804 grey/white pearl



ACHTUNG: neu angepasste lichttechnische Daten!

Die lichttechnischen Daten finden Sie auf der Rückseite oder mit dem QR-Code.

SCAN ME







Beachten Sie bitte die teilweise Ergänzung des Sortiments in der Rollenbreite auf 320 cm.

FACTS



SCREENS 295 / 299

Strahlungsphysikalische
Parameter und
Leistungsbeurteilung
nach DIN EN 14501 (295)
und DIN EN 13363-1 (299)

	T _v %		T _s %		R _s %		A _s %		g _{tot} (außen)* %		 0-4		 0-4	 0-4	 0-4
	vorne	hinten	vorne	hinten	vorne	hinten	vorne	hinten	vorne	hinten	vorne	hinten			
295111	20,9	20,9	21,3	21,3	66,0	66,0	12,7	12,7	16	16	2	2	0	0	2
295112	18,3	18,2	22,2	24,0	58,0	56,4	19,8	19,7	13	13	3	3	0	1	2
295200	14,8	14,7	16,5	16,5	41,6	39,6	41,9	43,9	15	15	2	2	0	1	2
295201	6,8	7,0	56,6	63,5	33,4	27,5	10,0	9,0	12	13	3	3	1	2	2
295300	7,1	7,5	10,3	10,9	32,0	26,4	57,7	62,8	12	13	3	3	1	2	2
295400	5,4	5,3	9,3	9,4	29,6	25,7	61,1	64,9	13	14	3	3	1	2	2
295500	7,6	7,3	12,8	12,8	27,8	31,1	59,5	56,1	13	13	3	3	1	2	2
295700	12,9	12,8	15,7	15,7	51,0	46,5	33,4	37,9	12	13	3	3	0	1	2
295701	15,8	15,8	18,0	18,0	52,7	52,7	29,2	29,2	13	13	3	3	0	1	2
295705	10,1	10,1	13,0	13,0	38,8	38,8	48,3	48,3	11	11	3	3	1	1	2
295706	6,9	7,0	9,4	10,0	29,0	25,0	61,6	65,0	9	10	4	3	1	2	2
295710	7,0	6,7	8,0	7,7	18,3	26,4	73,6	65,9	10	10	3	3	1	2	2
295711	5,1	5,1	5,3	5,3	6,7	6,7	88,0	88,0	10	10	3	3	1	2	2
295712	14,8	14,3	17,2	16,8	49,7	55,3	33,1	27,9	15	14	2	3	0	1	2
295720	15,2	15,2	17,0	16,5	41,4	41,4	41,6	42,1	15	15	2	2	0	2	1
295730	7,3	7,3	7,8	7,8	24,7	22,5	67,5	69,7	11	11	3	3	0	3	1
295731	6,6	6,6	7,1	7,1	22,5	25,3	70,4	67,6	11	11	3	3	0	3	1
295760	12,0	11,7	14,0	13,9	37,5	37,4	48,5	48,8	14	13	3	3	0	1	2
295800	15,8	15,8	16,9	17,0	49,9	45,4	33,2	37,6	11	11	3	3	0	1	2
295801	15,8	15,5	16,9	16,7	49,9	55,4	33,2	27,9	11	11	3	3	0	1	2
295802	7,4	7,5	9,7	9,8	40,0	31,2	50,3	59,0	12	12	3	3	1	2	2
295803	9,1	8,7	11,5	11,1	32,1	39,6	56,4	49,3	13	12	3	3	1	1	2
295804	7,6	7,6	9,8	9,8	33,9	27,8	56,3	62,3	12	12	3	3	1	2	2
295807	12,9	12,9	14,3	14,3	38,0	38,0	47,7	47,7	12	12	3	3	0	1	2
295808	10,2	10,2	11,0	11,0	36,9	36,9	52,1	52,1	12	12	3	3	1	1	2
295809	7,8	7,5	10,8	10,2	27,7	33,0	61,6	56,8	12	12	3	3	1	2	2
295810	6,8	6,8	7,1	7,1	20,5	20,4	72,4	72,5	11	11	3	3	0	2	2
295811	10,2	10,2	10,1	10,1	39,4	39,4	50,5	50,5	11	11	3	3	1	1	2
295812	8,0	8,0	8,3	8,3	17,0	18,4	74,7	73,3	12	12	3	3	0	3	1
295815	6,6	6,6	8,0	8,0	19,8	19,8	72,2	72,2	13	13	3	3	1	2	2
295820	5,0	4,8	5,0	5,5	11,7	15,4	83,4	79,1	12	11	3	3	1	2	2
295824	4,4	4,3	4,5	4,4	6,5	7,0	89,0	88,6	11	11	3	3	1	2	2
295825	4,8	4,6	5,1	5,0	13,3	9,6	81,6	85,4	11	11	3	3	1	2	2
295826	3,5	3,5	3,5	3,5	7,4	7,4	89,1	89,1	11	11	3	3	1	2	2
295900	4,2	4,2	4,3	4,3	5,9	5,9	89,8	89,8	12	12	3	3	1	2	2
295999	4,5	4,5	4,5	4,5	4,0	4,0	91,6	91,6	11	11	3	3	1	2	2
299801	4,3	4,3	5,3	5,3	48,8	58,5	45,9	36,2	8	8	4	4	2	2	2
299802	2,0	2,0	2,2	2,2	44,8	31,2	53,0	66,6	6	6	4	4	4	2	2
299811	2,1	2,1	2,8	2,8	36,9	36,9	60,3	60,3	5	5	4	4	4	2	2
299815	2,2	2,2	2,4	2,4	17,4	17,4	80,2	80,2	6	6	4	4	4	2	2
299820	1,2	1,2	1,2	1,2	10,5	14,0	88,3	84,8	9	9	4	4	4	2	2
299900	1,1	1,1	1,1	1,1	5,9	5,9	93,0	93,0	6	6	4	4	4	2	2