

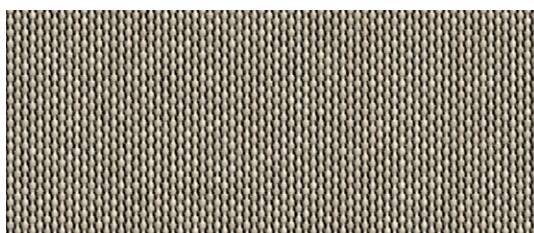
PVC FREE SCREENS
TWILIGHT
COMFORT | ELEMENTS



PVC FREE SCREENS



TWILIGHT COMFORT 262



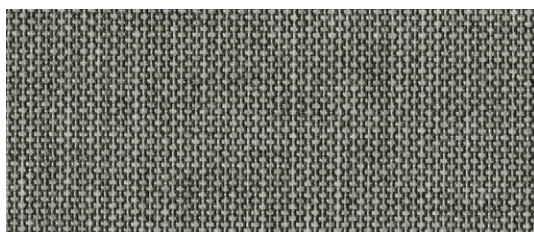
262 721 PLATINUM



262 810 TAUPE

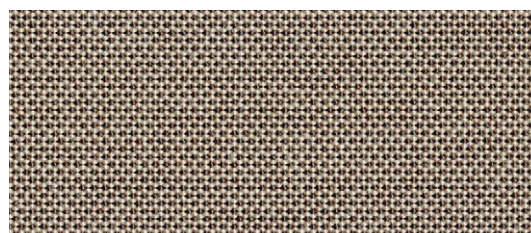


262 830 STEEL

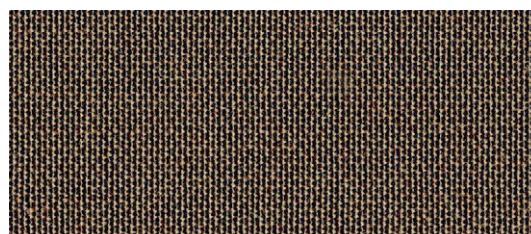


262 802 SMOKE

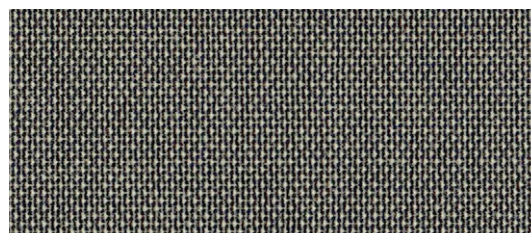
TWILIGHT ELEMENTS 214



214 T71 PLATINUM



214 T80 TAUPE



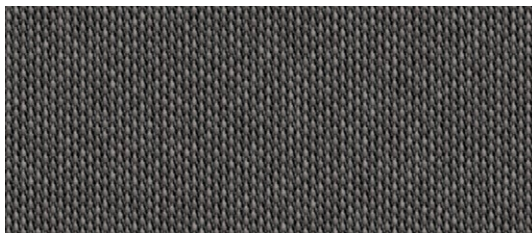
214 T83 STEEL



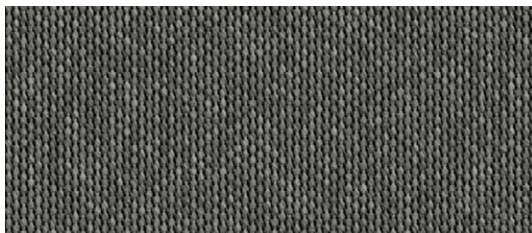
214 T82 SMOKE



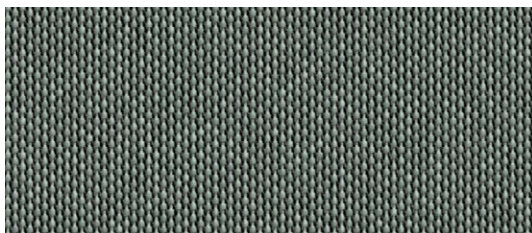
TWILIGHT COMFORT 262



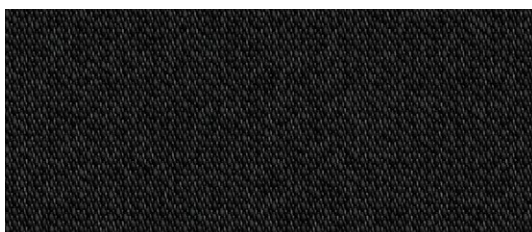
262 815 SLATE



262 814 GRAPHITE



262 621 CEMENT

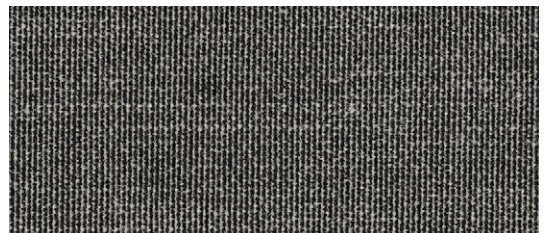


262 154 BLACK

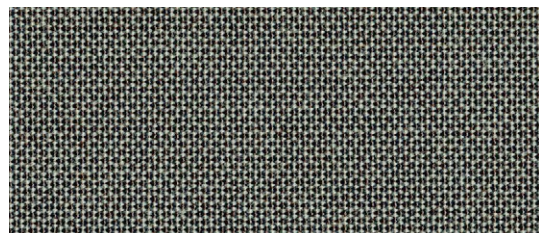
TWILIGHT ELEMENTS 214



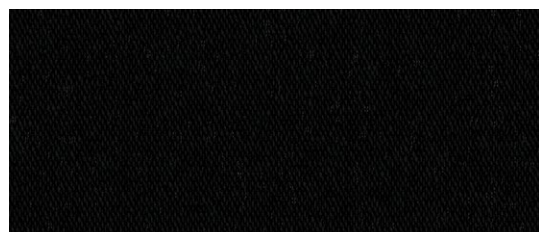
214 T85 SLATE



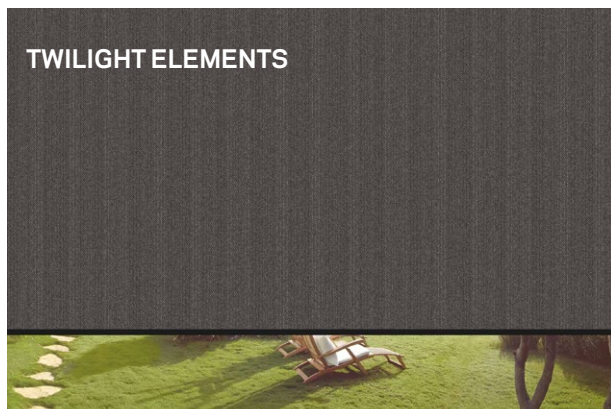
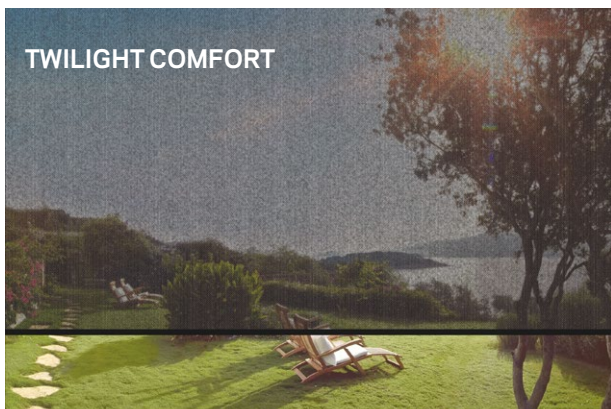
214 T84 GRAPHITE



214 T61 CEMENT



214 T94 BLACK



PVC Frei
PVC-free
Sans PVC
PVC-vrij
Senza PVC



Hohe Dimensionsstabilität
High dimensional stability
Haute stabilité dimensionnelle
Hoge dimensionale stabiliteit
Elevata stabilità dimensionale



Texgard Finish
Texgard finish
Finition Texgard
Texgard-afwerking
Finitura Texgard



Entwickelt für ZIP-Anlagen
Designed for ZIP systems
Conçu pour les systèmes ZIP
Ontwikkeld voor ZIP-systemen
Progettato per sistemi ZIP



Harmonische Durchsicht oder guter Sichtschutz

Harmonious transparency or effective privacy
Transparence harmonieuse ou bonne protection visuelle
Harmonieuze doorkijk of goede inzichtbescherming
Visione armoniosa o buona protezione della privacy



UV- & Lichtbeständig

UV- and light-resistant
Résistant aux UV et à la lumière
UV- en lichtbestendig
Resistente ai raggi UV e alla luce



Halogen Frei

Halogen-free
Sans halogène
Halogeenvrij
Senza alogeni

FACTS

TWILIGHT COMFORT 262

TWILIGHT ELEMENTS 214



SDA / PES (Special Construction)

SDA (Solution Dyed Acrylic)

DIN 60 001



235 g / m²

290 g / m²

DIN EN 12127



250 cm**, 300 cm

240 cm



0,6 mm

0,6 mm

DIN EN ISO 5084



min. 7

min. 7

DIN EN ISO 105 B02



4 %

0 %*

EN 410 (gemessen nach der dunkelsten Farbe | measured based on the darkest color | mesuré selon la couleur la plus foncée | gemeten op basis van de donkerste kleur | misurato in base al colore più scuro)



* 0% OF = Blickdicht (nicht zur 100 % Verdunkelung geeignet) | Opaque (not suitable for 100% blackout) | Opaque (non adapté à une obscurcissement total) | Opaak (niet geschikt voor volledige verduistering) | Opaco (non adatto all'oscuramento totale)

** Rollenbreite 250 cm ab 2026 verfügbar | Roll width of 250 cm available from 2026 | Largeur de rouleau de 250 cm disponible à partir de 2026 | Rolbreedte van 250 cm beschikbaar vanaf 2026 | Larghezza del rotolo di 250 cm disponibile dal 2026



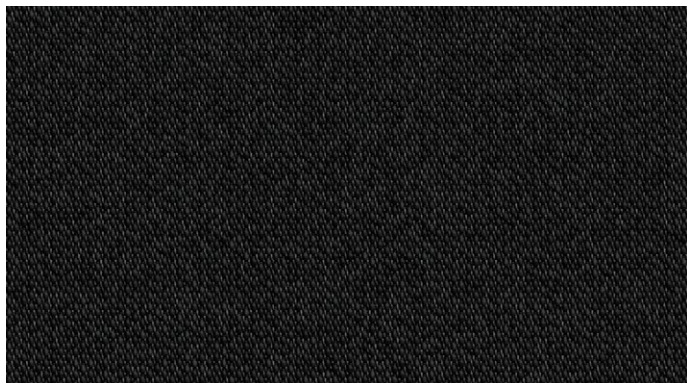
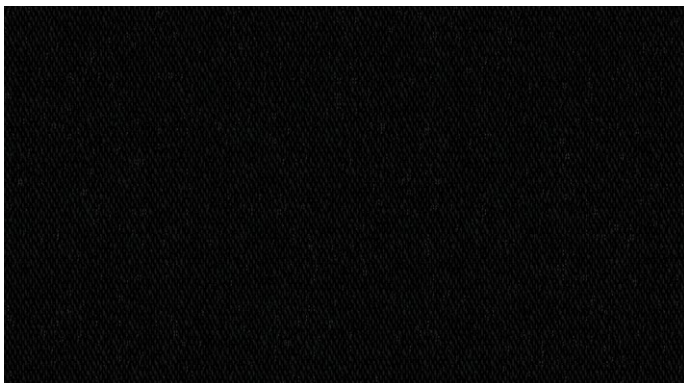
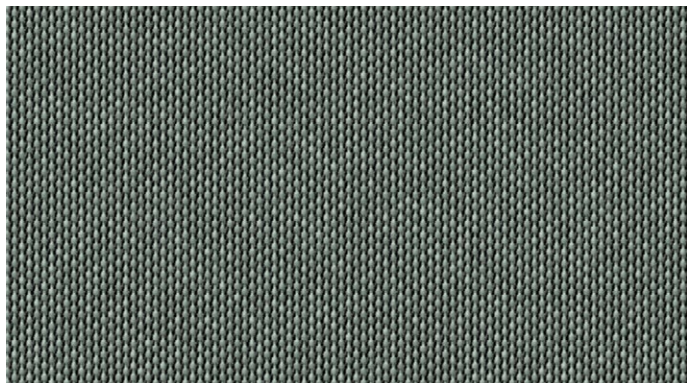
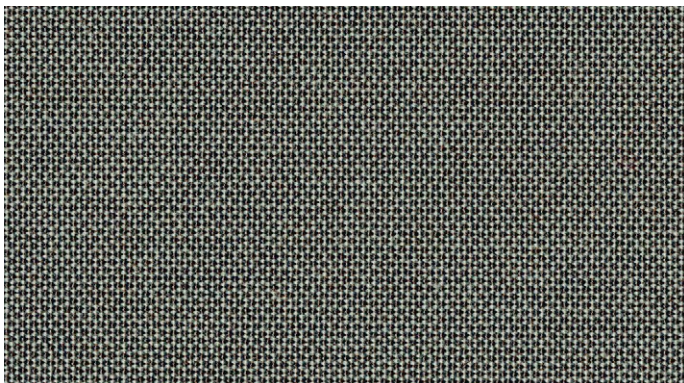
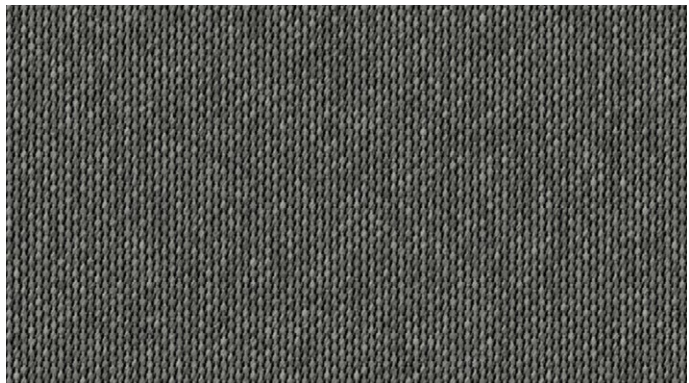
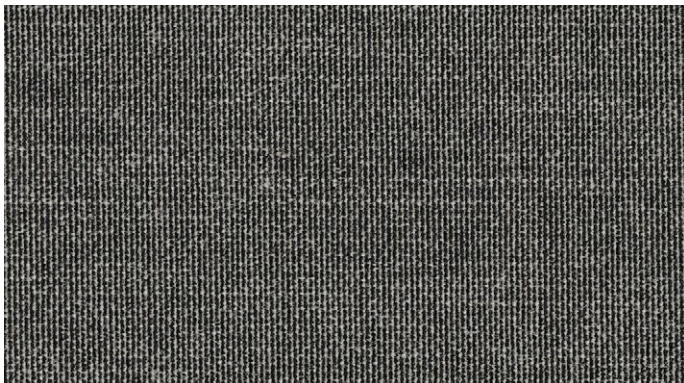
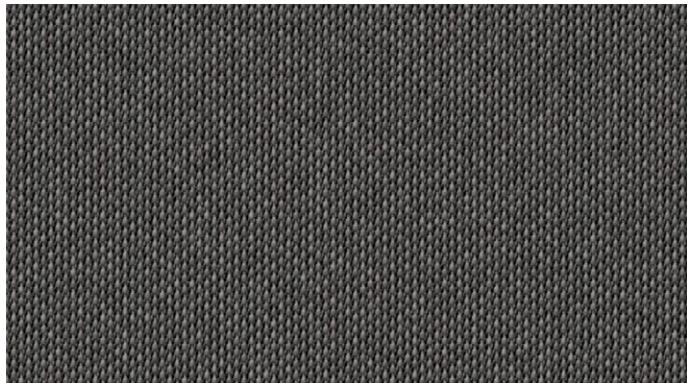
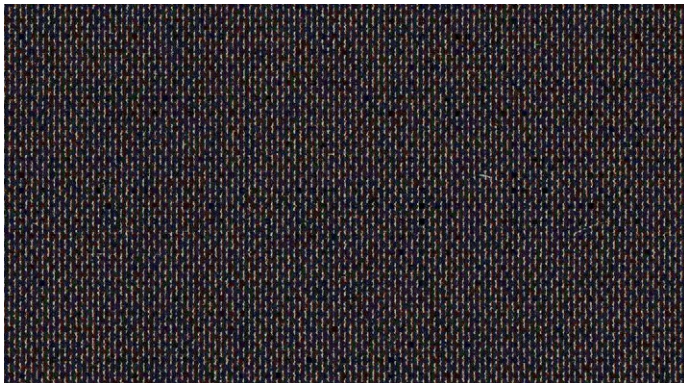
Technical data sheet
262 Twilight Comfort



Technical data sheet
214 Twilight Elements



Lichttechnische Daten
Lighting data
Données photométriques
Lichttechnische gegevens
Dati fotometrici





ZEICHENERKLÄRUNG
Explanation of symbols
Explication des symboles
Verklaring van symbolen
Spiegazione dei simboli



REINIGUNG & PFLEGE
Cleaning & Care
Nettoyage & Entretien
Reiniging & Verzorging
Pulizia & Cura

